



Organigramme
Organizational Chart
2017-2018

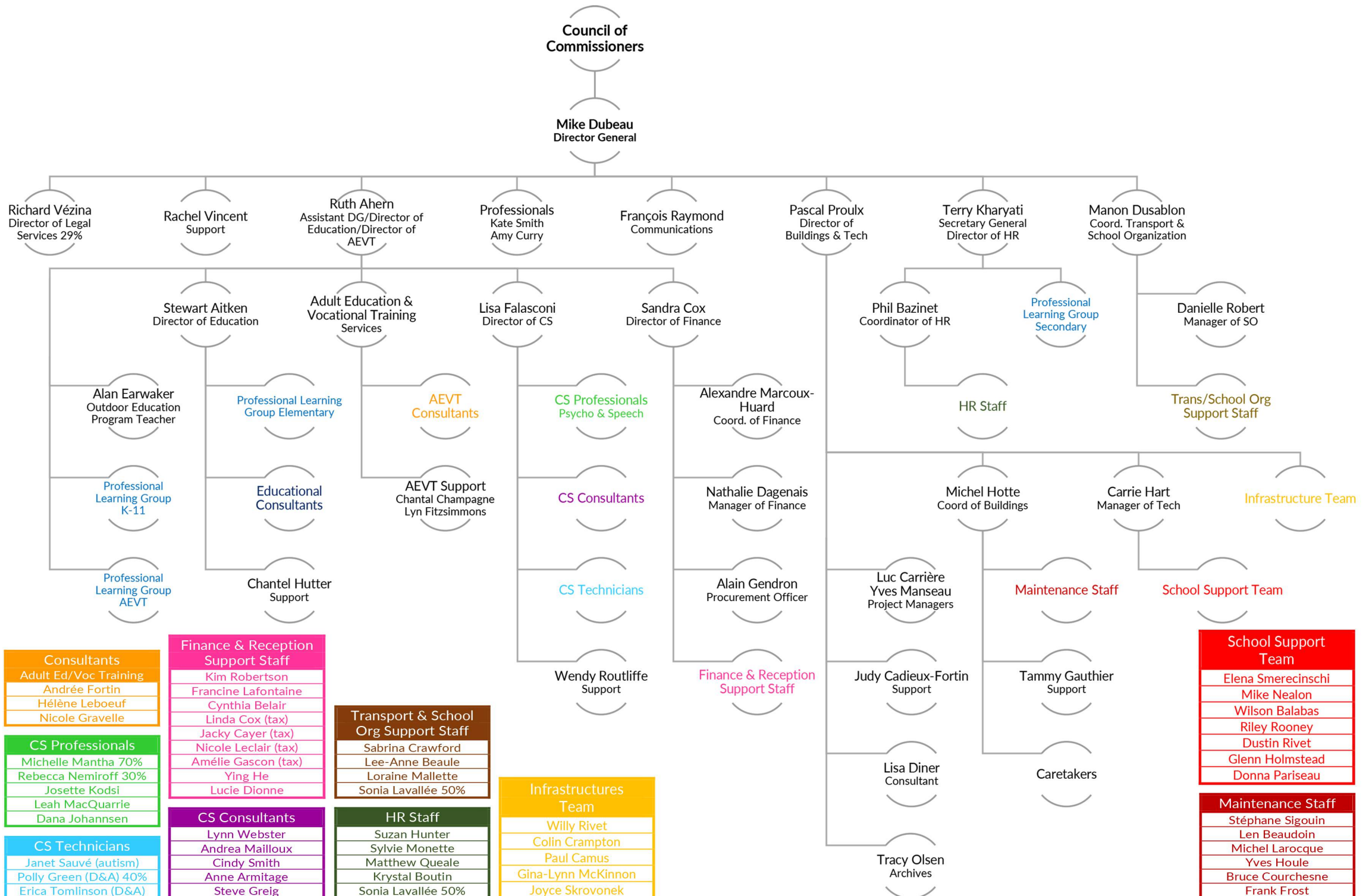
| PL Group Elementary | |
|---------------------|--|
| Val Link | |
| Andrea Gage | |
| David McFall | |
| Jo-Anne Georgeadis | |
| Ralph Mason | |
| Eldon Keon | |
| Julia Horner | |
| Céline Sévigny | |
| Julie Fram-Greg | |
| Grady Robson | |
| Marie-Ève Groulx | |
| Ann Valcov | |

| PL Group Secondary | |
|--------------------|--|
| Debra Stephens | |
| Dodie Payne | |
| Bill Rosseel | |
| Terri McPhail | |
| George Singfield | |
| Constance George | |
| Tara Laine | |

| PL Group K-11 | |
|--------------------|--|
| Neil Fleming | |
| Tammy Downing | |
| Mary-Louise Rogers | |
| Allison Boone | |
| Monia Clouthier | |
| Ryan Woodhouse | |
| Samantha Halpin | |
| Lorianne Bertrand | |
| Deb Picard | |
| Judy Price | |

| PL Group Adult Ed/Voc Training | |
|--------------------------------|--|
| Damian Curley | |
| Dawn Thompson | |
| Scott Cavers | |
| Mona Nesbitt | |
| Jennifer Dubeau | |

| Educational Consultants | |
|-------------------------|--|
| Jeff Harvey (math) | |
| Larissa Sansom (ELA) | |
| Virginia Lavigne (FSL) | |
| Judy Price (lit.) 70% | |
| Lee Randall (library) | |



| Consultants Adult Ed/Voc Training | |
|-----------------------------------|--|
| Andrée Fortin | |
| Hélène Leboeuf | |
| Nicole Gravelle | |

| CS Professionals | |
|----------------------|--|
| Michelle Mantha 70% | |
| Rebecca Nemiroff 30% | |
| Josette Kosi | |
| Leah MacQuarrie | |
| Dana Johannsen | |

| CS Technicians | |
|-----------------------|--|
| Janet Sauvé (autism) | |
| Polly Green (D&A) 40% | |
| Erica Tomlinson (D&A) | |

| Finance & Reception Support Staff | |
|-----------------------------------|--|
| Kim Robertson | |
| Francine Lafontaine | |
| Cynthia Belair | |
| Linda Cox (tax) | |
| Jacky Cayer (tax) | |
| Nicole Leclair (tax) | |
| Amélie Gascon (tax) | |
| Ying He | |
| Lucie Dionne | |

| CS Consultants | |
|-----------------|--|
| Lynn Webster | |
| Andrea Mailloux | |
| Cindy Smith | |
| Anne Armitage | |
| Steve Greig | |

| Transport & School Org Support Staff | |
|--------------------------------------|--|
| Sabrina Crawford | |
| Lee-Anne Beaulé | |
| Lorraine Mallette | |
| Sonia Lavallée 50% | |

| HR Staff | |
|--------------------|--|
| Suzan Hunter | |
| Sylvie Monette | |
| Matthew Queale | |
| Krystal Boutin | |
| Sonia Lavallée 50% | |

| Infrastructures Team | |
|----------------------|--|
| Willy Rivet | |
| Colin Crampton | |
| Paul Camus | |
| Gina-Lynn McKinnon | |
| Joyce Skrovonek | |

| School Support Team | |
|---------------------|--|
| Elena Smerecinski | |
| Mike Nealon | |
| Wilson Balabas | |
| Riley Rooney | |
| Dustin Rivet | |
| Glenn Holmstead | |
| Donna Pariseau | |

| Maintenance Staff | |
|-------------------|--|
| Stéphane Sigouin | |
| Len Beaudoin | |
| Michel Larocque | |
| Yves Houle | |
| Bruce Courchesne | |
| Frank Frost | |